



**YUIL** YUIL CO.,LTD  
[www.yuil.co](http://www.yuil.co)



### 300m<sup>3</sup>/Day Seawater Desalination Plant Ship

L.O.A            70.90m  
Breadth (M)    24.00m  
Depth (M)      4.50m  
Draft(D.L.W.L) 3.50m  
Gross Tonnage   1,710tonnes

Seawater Desalination Capacity    300m<sup>3</sup> per day  
Propulsion propeller                    2sets x FPP  
Main Engine                                2sets x 800PS x 1,800rpm



### GT420tons Class Full Electric Fueled Car Ferry

LOA	60.00m	Crew	4persons
Breadth	13.00m	Passenger	120persons
Depth	3.15m	Car loading	20ea
Draft	1.63m	Fixed Battery	2sets x 200kWh
GRT	422tons	Movable Battery	2sets x 800kWh
Speed	10knots	Propulsion Motor	2sets x 500kW



### **DWT3,500tons Class Oil Tanker (Epoxy Coated)**

LOA	87.30m	Main Engine	YANMAR, 1set x 1,920kW x 750rpm
Breadth	14.00m	Main Generator	380kW x 2sets x 320kWe
Depth	7.30m	Cargo Pump	750m <sup>3</sup> x 2sets (M/E PTO driven)
Draft	5.80m	Cargo Tanks	11holds Includ. Slop Tank (3,850m <sup>3</sup> )
GRT	1,999ons	Bow Thruster	200kW x 1set (CPP or FPP)
Speed	12knots	Hose Handling Crane	1set x 0.9tons x 14.5m

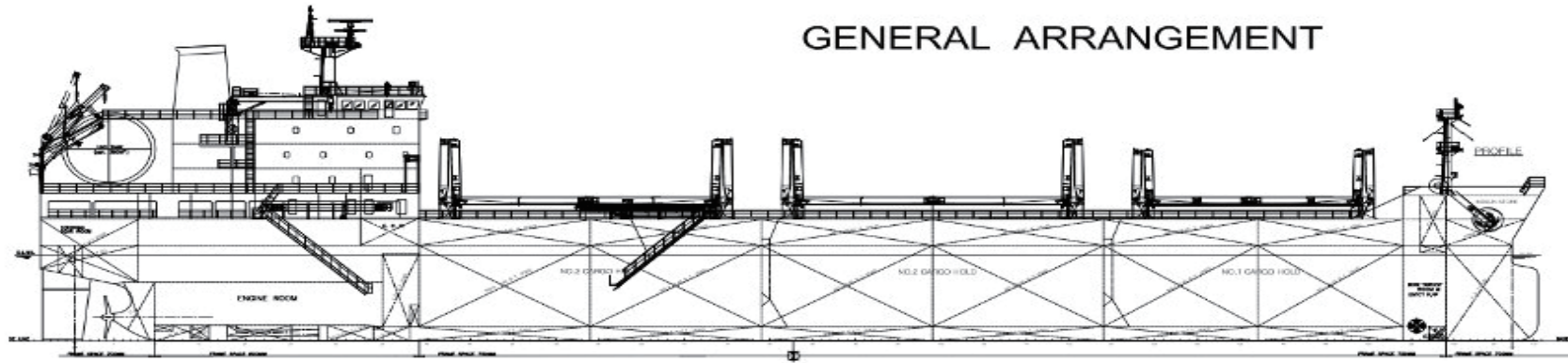
# Under construction in YUIL's yard (2023 Year)



## 17K CLASS BULK CARRIER (LNG Dual Fueled)

www.yuil.co  
office@yuilship.com

### GENERAL ARRANGEMENT



<b>MAIN DIMENSIONS</b>		<b>MAIN ENGINE</b>		<b>CARGO SYSTEM</b>	
L.O.A	Abt. 135.00 m	Type	1 set MAN 6S35ME-GI-9.7	Hatch cover	3Holds (Folding Type)
L.B.P	126.00 m	SMCR	3,150kW x 124 RPM		
Breath(Moulded)	23.00 m	NCR(90% MCR)	2,835kW x 119.7 RPM		
Depth(Moulded)	13.50 m	NOx	Tier II		
Draft(Design/Scantling))	9.50 m				
<b>Dead weight</b>		<b>SPEED, CONSUMPTION &amp; CRUISING RANGE</b>		<b>LNG FGSS SYSTEM</b>	
Scantling draft	Abt. 17,000 MT	Service Speed(15% S.M)	Abt. 11.5kts	Bunker station (on deck type)	
		D.F.O.C	Abt. 11.2 MT/Day	Glycol system	
		D.G.O.C	Abt. 9.5MT/Day	<b>BOG pre-heater</b>	
		Cruising range	Abt. 7,000 N. miles	High/low Pressure Pump	
				Nitrogen system	
<b>CAPACITIES</b>		<b>PROPELLER</b>		<b>FRESH WATER GENERATING SYSTEM</b>	
Fresh Water Tanks	Abt. 240 m <sup>3</sup>		F.P.P x 1 set	FW Generator Capacity	1set x 10 ton/day
Fuel Oil Tank	Abt. 350 m <sup>3</sup>				
Ballast Water Tanks	Abt.6,950 m <sup>3</sup>				
LNG tank (on-deck)	Abt. 380 m <sup>3</sup>				
<b>COMPLEMENT</b>		<b>STEAM PLANT</b>		<b>DECK MACHINERY</b>	
	25P	Composite Boiler	1set x 1,500kcal/h	Windlass	15.2 Ton x 9 M/min x 2 sets
<b>CLASSIFICATION</b>		<b>ELECTRIC GENERATING PLANT</b>		<b>BALLAST PUMP</b>	
✕KRS 1-Bulk Carrier (Double Skin), 'ESP'(EXP), BC-B(no MP), GRAB(20), IWS, BWT, PSPC, LFFS (DF-LNG), STC		Diesel Gen. Eng.	3sets x 600 kW x 900rpm	Pump	300 m <sup>3</sup> /h x 25 m x 2 sets
		Em'cy Generator	1set x 120kW x 1800rpm		

**YUIL** YUIL Co., Ltd.

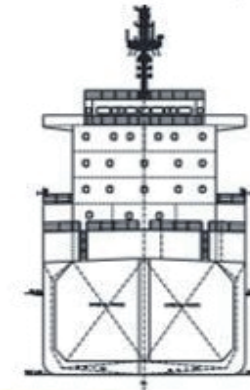
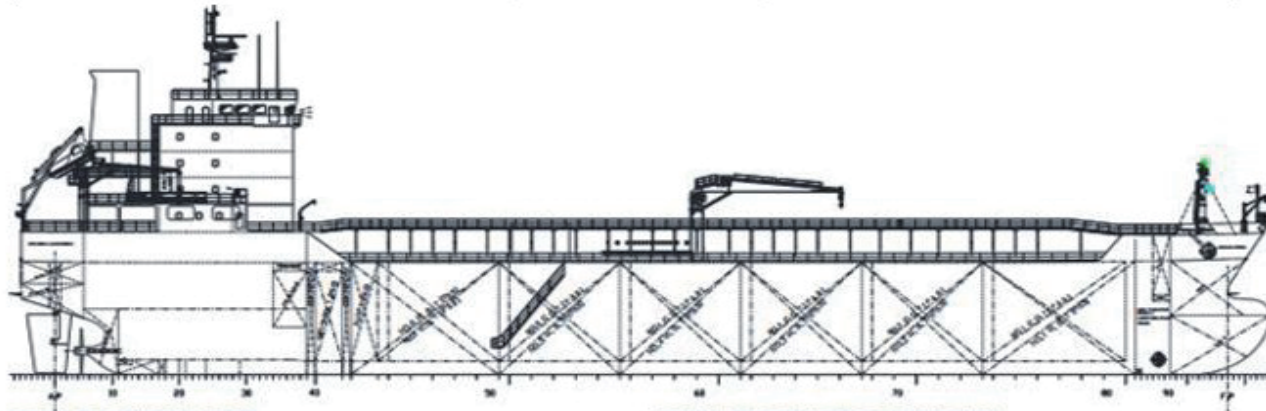
REF. No.	FESDEC1200LCT
DATE	FEB., 2023

Under developing ship design by YUIL (From 2023 Year~ )



**13K Class Oil & Chemical Tanker (Methanol Dual Fueled)**

www.yuil.co  
office@yuilship.com



**MAIN PARTICULARS**

- Length overall abt. 129.9 m
- Length between perpendiculars 122.0 m
- Breadth 21.0 m
- Depth 11.8 m
- Design draft (Td) 8.55 m
- Scantling draft (Ts) 8.55 m
- Complement 21+6 P

**DEADWEIGHT**

- Deadweight on Td/Ts 13,000 mt

**SPEED**

- Speed at 8.55 m (with 15% S.M.) 13.0 kts

**TANK CAPACITIES (100%)**

- Cargo Capacity abt. 14,000 m<sup>3</sup>
- Ballast Water abt. 5,300 m<sup>3</sup>
- Marine Gas Oil abt. 190 m<sup>3</sup>
- Fresh Water abt. 150 m<sup>3</sup>
- Methanol (Tanks in hold) abt. 450 m<sup>3</sup>

**MAIN PROPULSION SYSTEM**

- Type : Wartsila W6L32
- NMCR : 3,480 kW x 750.0 rpm
- SMCR : 3,300 kW x 130.0 rpm
- NCR : 2,970 kW x 125.5 rpm
- NOx reduction device : EGR

**FUEL CONSUMPTION (Methanol)**

- D.F.C. at NCR abt. 26.5 mt/day  
(L.C.V.= 19,900 kJ/kg)
- Cruising range abt. 4,100 N.M

**FUEL CONSUMPTION (MGO)**

- D.F.O.C. at NCR abt. 13.3 mt/day  
(L.C.V.= 42,700 kJ/kg)
- Cruising range abt. 3,700 N.M

**WATER BALLAST SYSTEM**

- Ballast pumps : 400 m<sup>3</sup>/h x 2 sets, Submerged type
- BWTS : 800 m<sup>3</sup>/h, UV + Filter type

**CARGO SYSTEM**

- Cargo segregation : Seven(7)
- Cargo pumps : 300 m<sup>3</sup>/h x 12 sets, Submerged type
- Slop pumps : 150 m<sup>3</sup>/h x 2 sets, Submerged type

**DECK MACHINERY**

- High pressure electro-hydraulic type
- 2 combined windlass / winch
- 2 mooring winches

**POWER SUPPLY**

- Main Generator : 900 kW x 2 sets
- Emergency Generator : 120 kW x 1 set

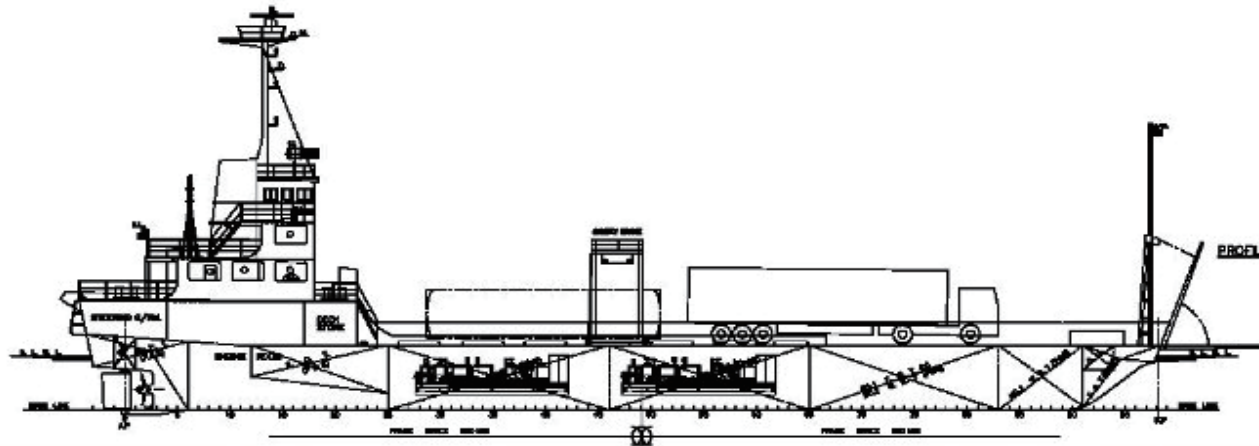
**NAVIGATION AIDS**

- Gyrocompass with auto pilot
- Radar
- Magnetic compass
- Navigator / VDR / AIS
- ECDIS with conning display

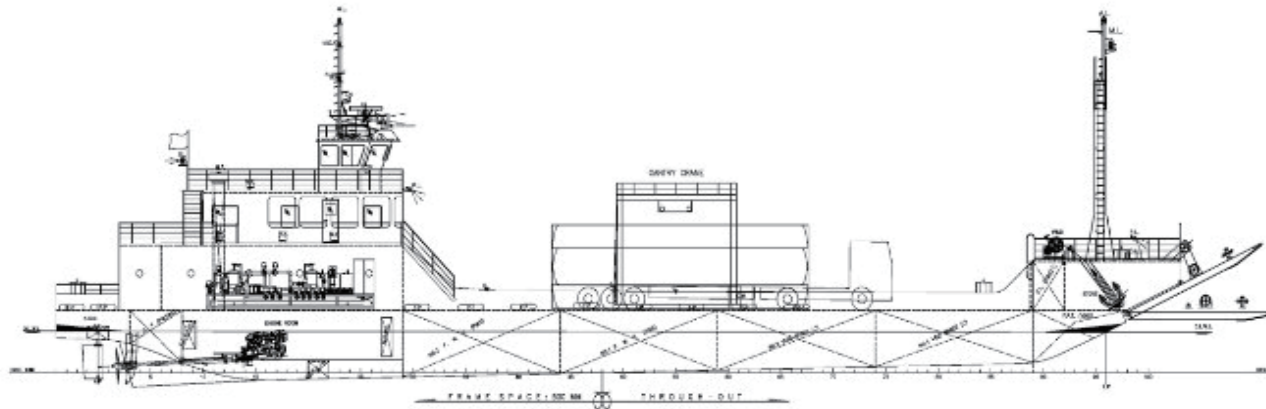


# 600m<sup>3</sup>/day Seawater Desalination Vessel

www.yuil.co  
office@yuilship.com



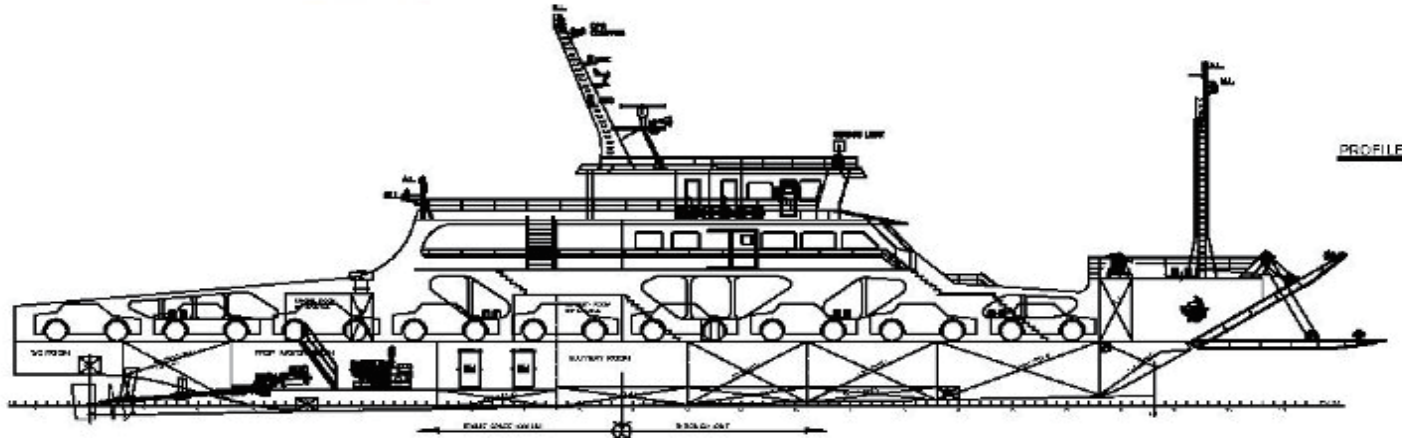
<b>MAIN DIMENSIONS</b>		<b>MAIN ENGINE</b>		<b>CARGO SYSTEM</b>	
L.O.A	Abt. 57.00 m	Type	2 sets YANMAR 6EY22AW	Fresh Water Pump	150 m <sup>3</sup> /h x 70m x 2 sets
L.B.P	54.00 m	MCR	736kW x 800 RPM		
Breath(Moulded)	17.50 m	NCR(85% MCR)	626kW x 758 RPM		
Depth(Moulded)	3.50 m	NOx	Tier II		
Draft(Design/Scantling))	2.90 m				
<b>Dead weight</b>		<b>SPEED, CONSUMPTION &amp; CRUISING RANGE</b>		<b>FRESH WATER GENERATING SYSTEM</b>	
Scantling draft	Abt. 1,200 MT	Service Speed(Design)	Abt. 11.0 kts	Capacity	600 m <sup>3</sup> /day
		D.F.O.C	Abt. 5.6 MT/Day		
		Cruising range	Abt. 3,800 N. miles		
<b>CAPACITIES</b>		<b>PROPELLER</b>		<b>GANTRY CRANE</b>	
Fresh Water Tanks	Abt. 900 m <sup>3</sup>		F.P.P x 2 sets	Electric Motor Driven	SWL 40 ton
Fuel Oil Tank	Abt. 100 m <sup>3</sup>				
Ballast Water Tanks	Abt. 500 m <sup>3</sup>				
<b>COMPLEMENT</b>		<b>STEAM PLANT</b>		<b>DECK MACHINERY</b>	
	8 P	Option		Windlass	7.0 Ton x 12 M/min x 2 sets
				Mooring Winch	5.0 Ton x 15M/min x 2 sets
<b>CLASSIFICATION</b>		<b>ELECTRIC GENERATING PLANT</b>		<b>BALLAST PUMP</b>	
KR	+KRSOC – Ro-Ro Ship, Car	Diesel Gen. Eng.	320 kW x 3 sets	Pump	100 m <sup>3</sup> /h x 20 m x 2 sets
	+KRMOC	Em'cy Generator	Nil		



<b>MAIN DIMENSIONS</b>		<b>MAIN ENGINE</b>		<b>2 sets</b>		<b>CARGO SYSTEM</b>	
L.O.A	Abt. 58.00 m	Type	YANMAR 6EY17W		Fresh Water Pump		100 m <sup>3</sup> /h x 70m x 2 sets
L.B.P	48.00 m	MCR	590kW x 1350 RPM				
Breath(Moulded)	12.00 m	NCR(85% MCR)	502kW x 1279 RPM				
Depth(Moulded)	2.70 m	NOx	Tier II				
Draft(Design/Scantling))	1.80 / 2.00 m						
<b>Dead weight</b>		<b>SPEED, CONSUMPTION &amp; CRUISING RANGE</b>		<b>FRESH WATER GENERATING SYSTEM</b>			
Scantling draft	Abt. 400 MT	Service Speed(Design)	Abt. 11.5 kts		Capacity		300 m <sup>3</sup> /day
		D.F.O.C	Abt. 4.7 MT/Day				
		Cruising range	Abt. 1,600 N. miles				
<b>CAPACITIES</b>		<b>PROPELLER</b>		<b>GANTRY CRANE</b>			
Fresh Water Tanks	Abt. 300 m <sup>3</sup>	F.P.P x 2 sets		Electric Motor Driven		SWL 40 ton	
Fuel Oil Tank	Abt. 35 m <sup>3</sup>						
		<b>STEAM PLANT</b>		<b>DECK MACHINERY</b>			
		Option		Windlass		4.5 Ton x 12 M/min x 2 sets	
				Mooring Winch		2.5 Ton x 15M/min x 2 sets	
<b>COMPLEMENT</b>		<b>ELECTRIC GENERATING PLANT</b>		<b>BALLAST PUMP</b>			
8 P		Diesel Gen. Eng.		150 kW x 2 sets		Nil	
<b>CLASSIFICATION</b>		Em'cy Generator		Nil			
KR +KRSOC – Ro-Ro Ship .							
Car							
+KRMOC							

# YUIL 60m Class Hybrid Car-Ferry

www.yuil.co  
office@yuilship.com



## MAIN DIMENSIONS

L.O.A	Abt. 60.00 m
L.B.P	49.00 m
Breath(Moulded)	13.00 m
Depth(Moulded)	3.15 m
Draft(Design/Scantling))	1.60 / 1.70 m

## PROPULSION MOTOR

2 sets  
Max. Power 560kW x 1200RPM

## LIFE SAVING APPLIANCE

Life Raft	15P x 4 sets
Life Raft	6P x 1 set
Life Jacket	137 sets
Life Jacket(Children)	12 sets

## Dead weight

Scantling draft	Abt. 400 MT
-----------------	-------------

## SPEED, CONSUMPTION & CRUISING RANGE

Max. Speed(Design draft)	Abt. 11.0 kts
D.F.O.C	Abt. 6.4 MT/Day
Cruising range	Abt. 1,700 N. miles

## NAV. EQUIPMENT

X-band Radar	1 set
DGPS Navigator	1 set
AIS	1 set
VDR	1 set

## CAPACITIES

Fresh Water Tank	Abt. 20 m3
Fuel Oil Tank	Abt. 50 m3
Ballast Water Tank	Abt. 60 m3
Car	29 unit
Passenger	120 P

## PROPELLER

F.P.P x 2 sets

## BATTERY SYSTEM

Fixed	800kWh x 2 sets
-------	-----------------

## STEAM PLANT

Option

## DECK MACHINERY

Windlass	4.5 Ton x 9 M/min x 2 sets
Capstan	2.5 Ton x 15M/min x 2 sets

## COMPLEMENT

8 P

## CLASSIFICATION

KR +KRSOC – Passenger Ship .  
Ca Ferry  
+KRMOC

## ELECTRIC GENERATING PLANT

Diesel Gen. Eng.	500 kW x 4 sets
Em'cy Generator	Nil

## BALLAST PUMP

Capacity	40 m3/h x 35m x 2 sets
----------	------------------------

YUIL YUIL Co., Ltd

REF. No.

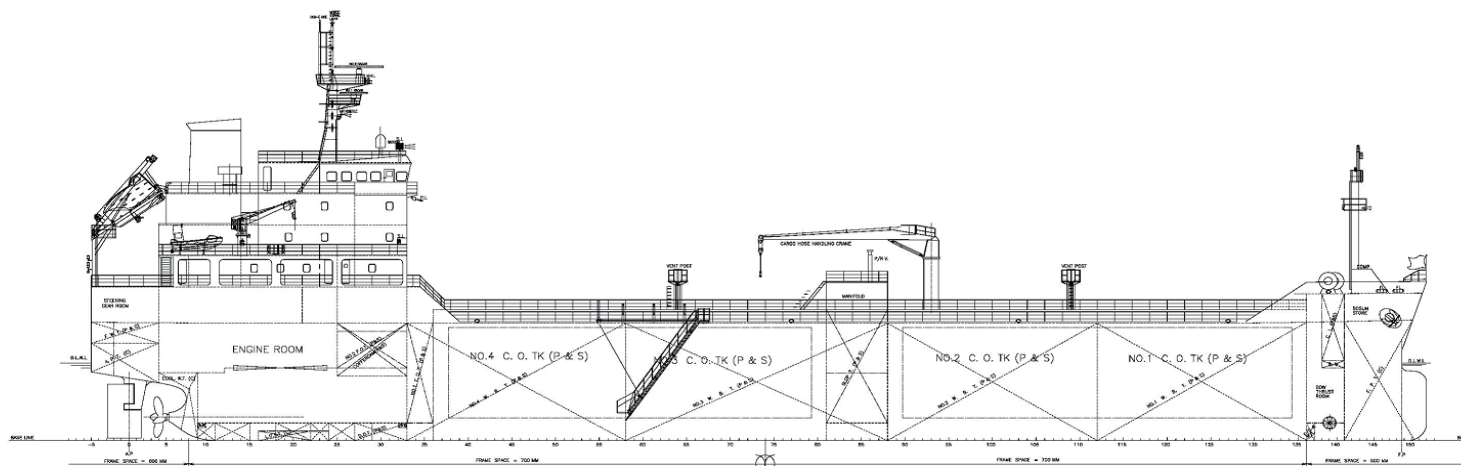
FESDEC60mLCT

DATE

MAR., 2023

# YUIL DWT 6,800 TON CLASS ASPHALT CARRIER

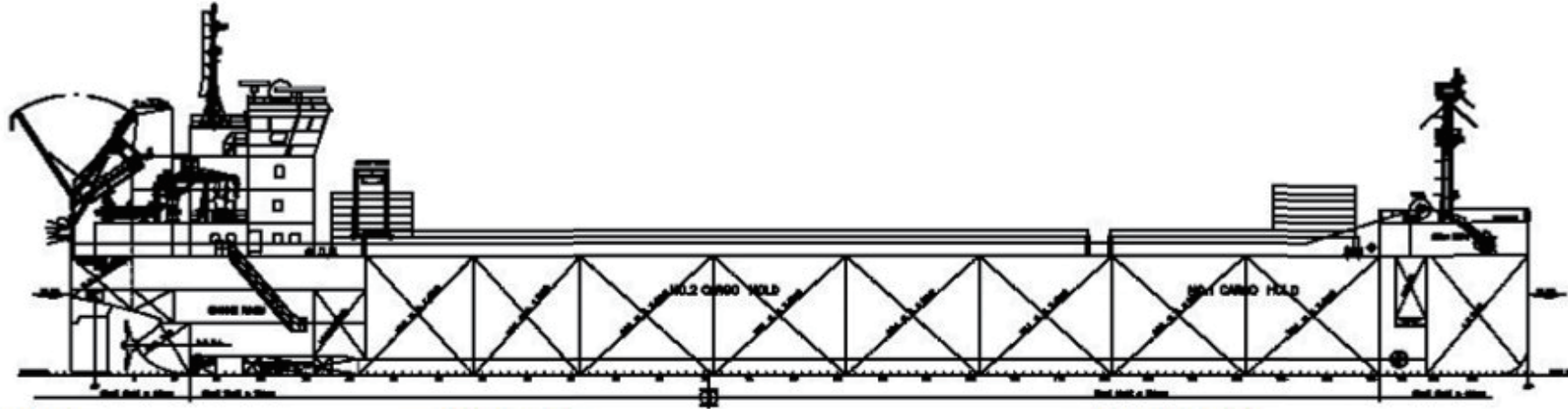
www.yuil.co  
office@yuilship.com



<b>MAIN DIMENSIONS</b>		<b>MAIN ENGINE</b>		<b>CARGO SYSTEM (Electric motor driven)</b>	
L.O.A	106.00 m	Type	HANSHIN or HYUNDAI HIMSEN	Cargo Pump	500 m <sup>3</sup> /h x 90m x 2 sets
L.B.P	102.00 m	MCR	Abt. 2,427 kW or Equivalent	Slop Pump	70 m <sup>3</sup> /h x 90m x 1 set
Breath(Moulded)	19.20 m	NCR(85% MCR)	Abt. 2,063 kW		
Depth(Moulded)	6.60 m	NOx	Tier II		
Draft(Design/Scantling))	6.70 m				
<b>DEAD WEIGHT</b>		<b>SPEED, CONSUMPTION &amp; CRUISING RANGE</b>		<b>CARGO TANK COATING</b>	
Scantling Drafft	6,800 MT	Service Speed(Design)	Abt. 11.8 kts	Slop tanks	Epoxy
		D.F.O.C	Abt. 8.8 MT/Day	<b>CARGO TANK CLEANING SYSTEM</b>	
		Cruising range	Abt. 7,000 N. miles	Nil	
<b>CAPACITIES</b>		<b>PROPELLER</b>		<b>BOW THRUSTER</b>	
Cargo Tanks	Abt. 6,500 m <sup>3</sup>	F.P.P(4 or 5 blades) x 1 set		Electric motor driven 350 kW	
Slop Tank	Abt. 200 m <sup>3</sup>	<b>CARGO HEATING SYSTEM</b>		<b>DECK MACHINERY</b>	
Fuel Oil Tank	Abt. 240 m <sup>3</sup>	Thermal oil heater 2 sets 1,163kwh x 5 kg/cm <sup>2</sup>		Windlass 2 sets	
Marine Gas Oil Tank	Abt. 80 m <sup>3</sup>			Mooring Winch 2 sets	
Ballast Water Tank	Abt. 2,600 m <sup>3</sup>			<b>BALLAST PUMP</b>	
Fresh Water Tank	Abt. 100 m <sup>3</sup>			Pump 250 m <sup>3</sup> /h x 25 m x 2 sets	
<b>COMPLEMENT</b>		<b>ELECTRIC GENERATING PLANT</b>		Ballast Water Treatment 500 m <sup>3</sup> /h x 1 set	
18 P		Diesel Gen. Eng. 500 kW x 3 sets			
<b>CLASSIFICATION</b>		Em'cy Generator 100 kW x 1 set			
KR +KRS1 – Oil Tanker, Asphalt(FAO)/Product(FAO),, PSPC, CLEAN1, LI +KRM1 - BWT					

**YUIL** YUIL Co., Ltd.

REF. No.	FESDEC6800AS
DATE	March 2023



<b>MAIN DIMENSIONS</b>		<b>MAIN ENGINE</b>		<b>CARGO SYSTEM</b>	
L.O.A	Abt. 115.00 m	Type	Hyundai Himsen 9H21CP	No. of Cargo Hold	Two(2) Cargo Holds
L.B.P	113.00 m	MCR	2,160 kW x 900 RPM	Hatch Cover (Upper Dk)	Pontoon
Breath(Moulded)	17.50 m	NCR(85% MCR)	1,836 kW x 853 RPM	(2nd Dk)	Pontoon
Depth(Moulded)	9.50 m	NOx	Tier Iii	2 <sup>nd</sup> Deck Hatch cover to be used for two(2) Grain BHD	
Draft	6.50 m				
<b>DEADWEIGHT</b>		<b>SPEED, CONSUMPTION &amp; CRUISING RANGE</b>		<b>GANTRY CRANE</b>	
DWT(Scantling)	Abt. 7,600 MT	Service Speed(85%MCR,15% SM)	Abt. 11.5 kts	Hatch cover handling	
		DFOC(85% MCR)	7.89 MT/Day		
		DFOC(75% MCR)	6.96 MT/Day		
		Service speed(75% MCR, 15% S.M)	Abt. 11.0 kts		
<b>CAPACITIES</b>		<b>PROPELLE</b>		<b>CARGO HOLD VENTILATION</b>	
Cargo Holds	Abt. 11,000 m <sup>3</sup>		C.P.P x 1 set	Natural ventilation (Option : Mechanical)	
Fuel Oil Tank	Abt. 150 m <sup>3</sup>				
M.G.O. Tank	Abt. 100 m <sup>3</sup>	<b>STEAM PLANT</b>		<b>DECK MACHINERY</b>	
Fresh Water Tank	Abt. 100 m <sup>3</sup>	Composite Boiler	700 kg/h	Windlass	2 sets
Ballast Water Tank	Abt. 3,000 m <sup>3</sup>			Mooring Winch	2 sets
				Bow Thruster (Electric Motor)	3 00kW x 1 set
<b>COMPLEMENT</b>		<b>ELECTRIC GENERATING PLANT</b>		<b>BALLAST PUMP</b>	
	14 P	Diesel Gen.	120 kW x 2 sets	Pump	200 m <sup>3</sup> /h x 25 mlc x 2 sets
<b>CLASSIFICATION</b>		Shaft Generator(PTO/PTI)	330 kW x 1 set	Ballast Water Treatment	400 m <sup>3</sup> /h x 1 set
DNV-GL	+1 Multi-purpose dry cargo ship, Grab(20), BWM(T), EO, BIS, TMON, Swedish-Finnish Ice Class 1B	Em'cy Generator	125 kW x 1 set		
		Battery pack (In Port /Boost)	Abt. 950kW		



No.65, Daebulsandan 1-ro, Samho-eup, Yeongam-gun,  
Jeollanam-do, South Korea

Tel : +82-61-812-2752

Fax : +82-61-463-9334

Company E-mail : [office@yuilship.com](mailto:office@yuilship.com)

Newbuilding Business : [kjkim9v@yuilship.com](mailto:kjkim9v@yuilship.com)

Offshore Business : [youngscheon@yuilship.com](mailto:youngscheon@yuilship.com)

Web Site : [www.yuil.co](http://www.yuil.co)